

NORTHERN LIGHTS 2017

Month # 12
JUNE

BLOCK #12
BROKEN DISHES

(3) NORTHERN LIGHTS
CONNECTING BLOCKS

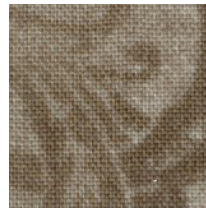


LIGHTS

B



DARK

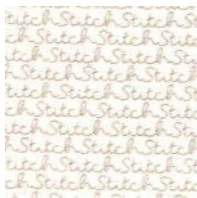


THEME

A



E, F, G
8 ASSORTED



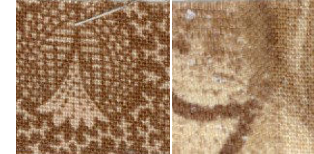
C



DARK



C



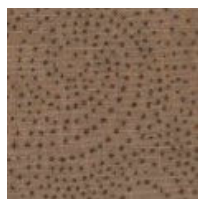
D



MEDIUM



H



MEDIUM



I



We gave you 2 mediums and 2 darks, instead of 1 each. So you will cut 4 triangles from each of these fabrics. This will give you a scrappier block.



STITCHIN'
HEAVEN
TEXAS PREMIER QUILT SHOP
(800) 841-3901
info@stitchinheaven.com