

OUR HOME TOWN 2016

Month # 4

FLAGS AND GRANDMAS' HOUSE



FLAG REDS



FLAGS BLUE



FLAGS
BACKGROUNDS
1 THU 3
(32 X 4)

#4 (6 X 14)
THIS ONE IS ALSO
THE BG FOR
GRANDMA'S
HOUSE



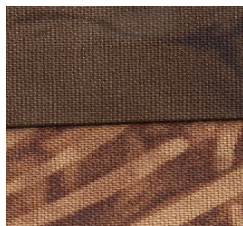
OHIO STAR CENTERS



OHIO STAR POINTS



FLAG
POLES



HOUSE FRONT



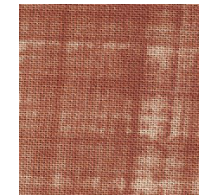
HOUSE SIDE



WINDOWS



ROOF



DOOR



CHIMNEY



903-638-6915
bomhq@stitchinheaven.com