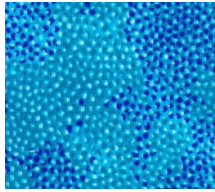


REFLECTIONS

Month #2

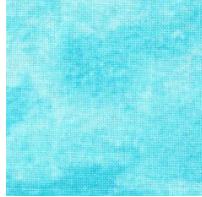
**JAMIE
Block #9**



TEMPLATE
A6



TEMPLATE
M8

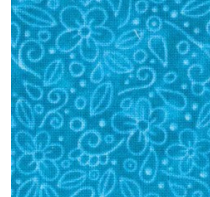


TEMPLATE
L7 REV

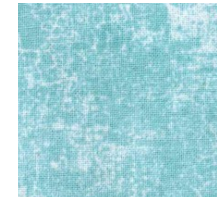


TEMPLATE
L7

**LYNETTE
Block #18**



TEMPLATE
N4



TEMPLATE
F10



TEMPLATE
F10

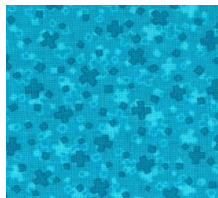


TRIANGLE
FILLERS

**ERIN
Block #29**



TEMPLATE
J3



TEMPLATE
F4/J3



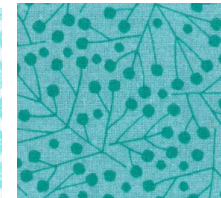
TEMPLATE
Q7



TEMPLATE
F6



TEMPLATE
C3



TEMPLATE
C3



TEMPLATE
C3

**MAIKE
Block #40**

SOME OF YOUR FABRICS
MAY BE DIFFERENT
FROM THOSE PICTURED
BUT WILL BE SIMILAR.



903-760-7397
bomhq@stitchinheaven.com