

RIVER ROCK

Month #4

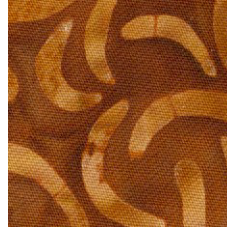
BLOCK: S6, 4A, 4B
Block #4



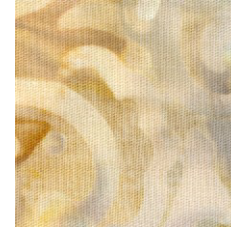
Fabric #3: 4B, 4B



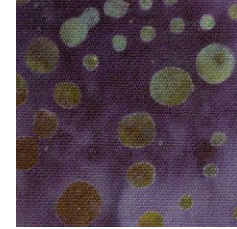
Fabric #4: 4A



Fabric #8: 4B



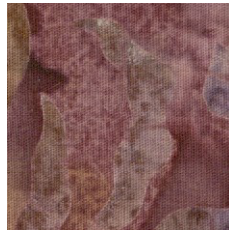
Fabric #11: 4B, 4B



Fabric #12: 4B



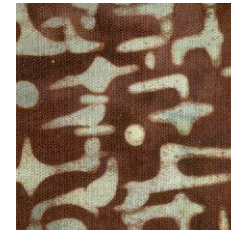
Fabric #13: S6



Fabric #17: 4A



Fabric #19: 4A



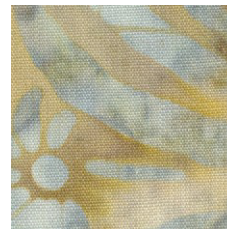
Fabric #20: 4B



Fabric #30: 4B, 4A



Fabric #32: 4A



Fabric #35: 4A, 4A, 4B, 4B



Fabric #36: S6, 4A, S6,
* 2 cuts: 6 x 6 is 4A



903-638-6915

bomhq@stitchinheaven.com