

# RIVER ROCK

Month #9

9A, 9B, S10  
Block #9

BORDER FABRICS  
ARE ON A SEPA-  
RATE FABRIC KEY



Fabric #1: 6 x HOW



Fabric #3: 6 x WOF



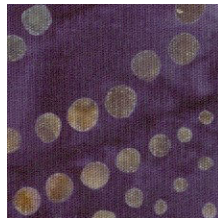
Fabric #4: 5 x WOF  
\*\*\*Includes border fabric



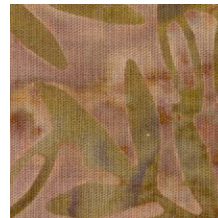
Fabric #5: 8 x 10  
\*\*\*Includes border fabric



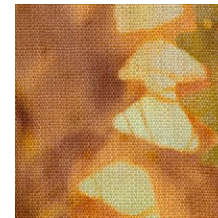
Fabric #7: 6 x 11



Fabric #12: 10 x 9



Fabric #17: 32 x WOF  
Includes Binding



Fabric #18: 7 x 7



Fabric #24: 10 x WOF  
\*\*\*Includes border fabric



Fabric #25: 10 x 10  
And 6 x HOW



Fabric #28: 6 x HOW



Fabric #30: 5 x HOW



Fabric #33: 10 x 10



Fabric #34: 6 x WOF



Fabric #35: 7 x 7



903-638-6915

[bomhq@stitchinheaven.com](mailto:bomhq@stitchinheaven.com)

\*\*\*Note these fabric cuts include the border fabric, so number it and save it!