

ROSEVILLE ALBUM

Month #1

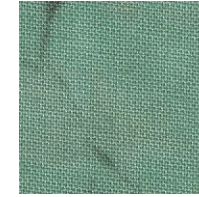
Block #1



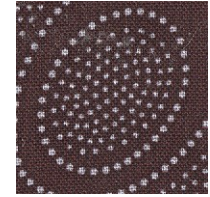
**BACKGROUND
(13 BLOCKS)**
Step #3 in
cutting directions



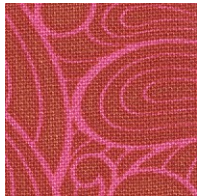
LEAF



LEAF



**BRANCH/STEM
(ENTIRE PROGRAM)**



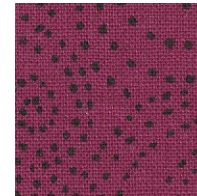
**BIG FLOWER
& BIG CIRCLES (3)**



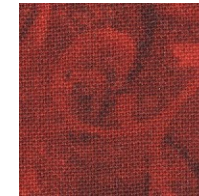
**CIRCLES
(5)**



**LEAF &
CIRCLES (5)**



**LEAVES (2)
& CIRCLES (3)**



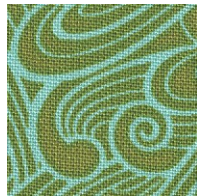
**BIRD
BODY**



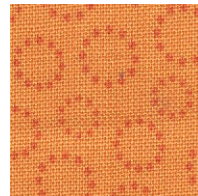
**BIRD
WINGS**



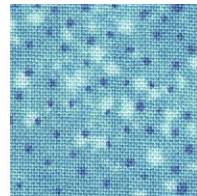
**MIDDLE
FLOWER
LEAVES (2)**



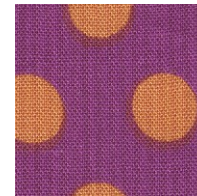
**MIDDLE
FLOWER
LEAVES (2)**



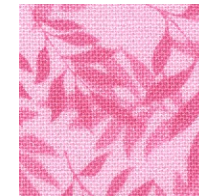
**MIDDLE
FLOWER
BASE (2)**



**MIDDLE
FLOWER
BASE (1)**



**MIDDLE
FLOWER**



**MIDDLE
FLOWER**



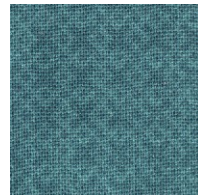
**MIDDLE
FLOWER**



**BASKET
& LARGE
CIRCLE (1)**



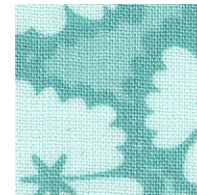
**BASKET
CENTER (2)**



**BASKET
CENTER (2)**



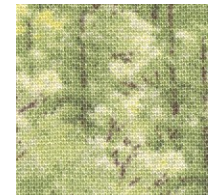
**BASKET
CENTER (1)**



**BASKET
CIRCLES (2)**



LEAVES



LEAVES

