



**BACKGROUND
(13 BLOCKS)**
Step #3 in
cutting directions

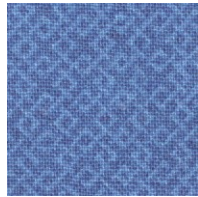
ROSEVILLE ALBUM

Month #13

Block #13



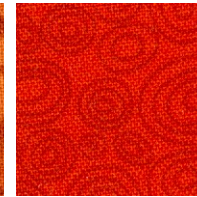
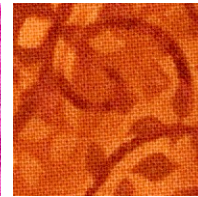
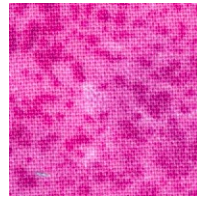
**CENTER
CIRCLE**



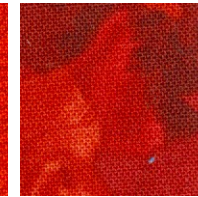
**CENTER
FLOWER**



← **BIRD WINGS, TAIL & BUD** →



**CENTER
RING**



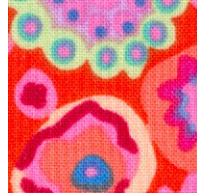
**LARGE
LEAF**



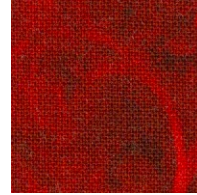
**LARGE
LEAF**



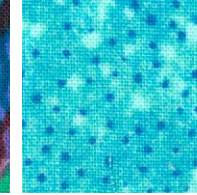
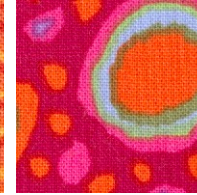
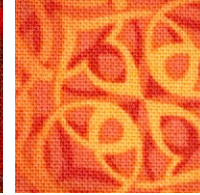
**LARGE
LEAF**



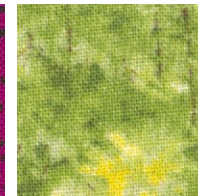
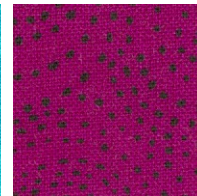
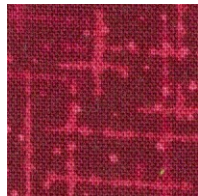
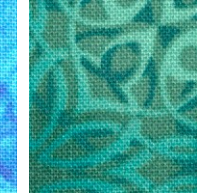
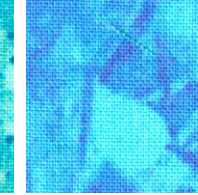
**LARGE
LEAF**



← **BIRD BODY** →



← **SMALL LEAVES** →



← **DOTS** →



903-638-6915
bomhq@stitchinheaven.com