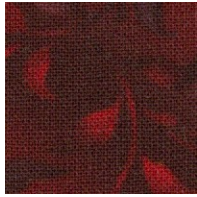
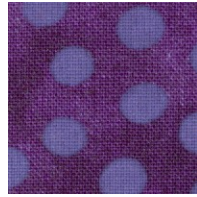




**BACKGROUND
(13 BLOCKS)**
Step #3 in
cutting directions



**BIG
FLOWER**

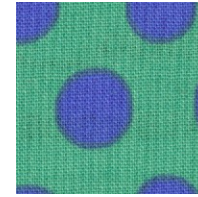


**BIG
FLOWER**

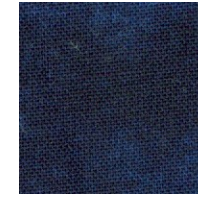
ROSEVILLE ALBUM

Month #2

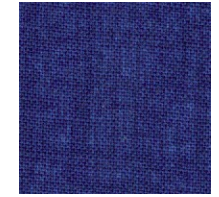
Block #2



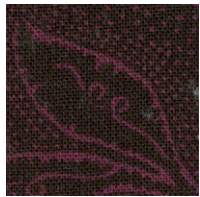
VASE



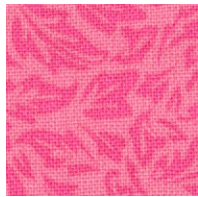
**VASE
HANDLES**



**VASE
HIGHLIGHTS**



**MIDDLE
FLOWER**



**MIDDLE
FLOWER &
CIRCLES (2)**



**MIDDLE
FLOWER**



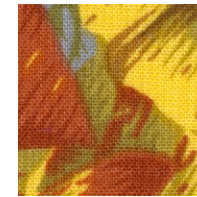
LEAF



**LEAF &
CIRCLE**



**CENTER
FLOWER**



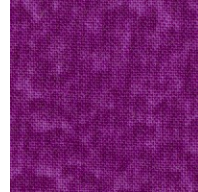
**CENTER
FLOWER**



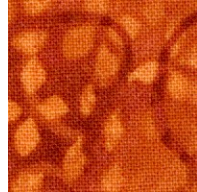
**BOTTOM
FLOWER**



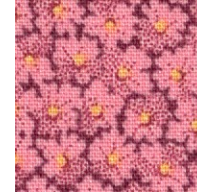
**BOTTOM
FLOWER**



**BOTTOM
FLOWER**



**BOTTOM
FLOWER**



**HANDLE
CIRCLES
(2)**



**CIRCLES
(2)**



**BIG FLOWER
BASE, CENTER
& LARGE LEAF**



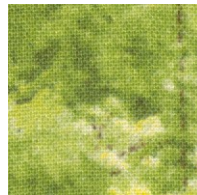
**LARGE
CIRCLE &
LEAVES (2)**



**LONG LEAF
& LEAF**



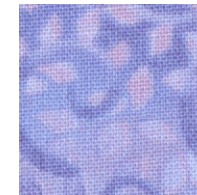
**MIDDLE
FLOWER &
CIRCLES (2)**



LEAVES (4)



LEAVES (2)



**BIG
FLOWER
BASE**



**LARGE
CIRCLE
& LEAF**



903-638-6915

bomhq@stitchinheaven.com