

BACKGROUND
(13 BLOCKS)
Step #3 in
cutting directions

ROSEVILLE ALBUM

Month #3

Block #3



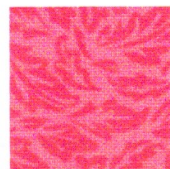
VASE



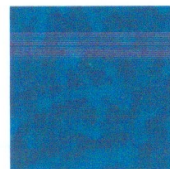
**VASE
CIRCLES
(2)**



**BIG FLOWER
&
CIRCLES (2)**



**BIG FLOWER
&
CIRCLES (2)**



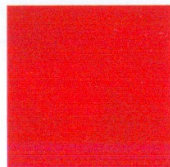
**BOTTOM
FLOWER**



**BOTTOM
FLOWER**



**BOTTOM
FLOWER**



**BOTTOM
FLOWER**



**BOTTOM
FLOWER
CALYX & LEAF**



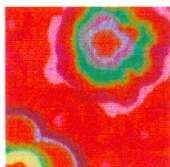
**BUD &
CALYX**



**BUD &
CIRCLE**



**CENTER-
FLOWER**



**CENTER
FLOWER**



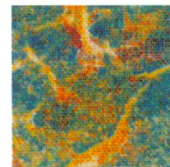
**BUD,
CIRCLES (2)
& LEAF**



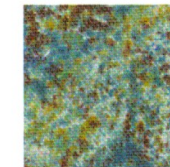
LEAF



**BUD &
LEAVES**



**LONG
LEAVES (2)
&
CALYXES (3)**



**BOTTOM FLOWER
CALYX, LONG
LEAVES (2) &
SMALL CALYX (2)**



903-638-6915

bomhq@stitchinheaven.com