



**BACKGROUND
(13 BLOCKS)
Step #3 in
cutting directions**

ROSEVILLE ALBUM

Month #5

Block #5



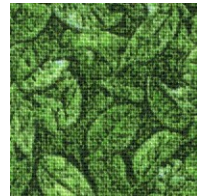
VASE



**VASE STEM
& RIM**



**VASE
BASE**



**VASE
CIRCLES (2)**



**BEE
BODY**



**APPLE
& BERRY
CIRCLES (2)**



**BIRD
WING
(4)**



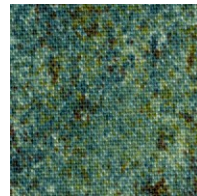
**BEE
WINGS**



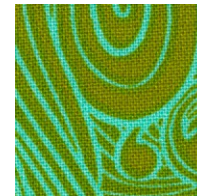
PINEAPPLE



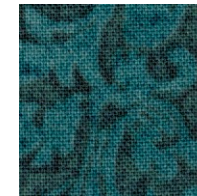
**BIRD
BODY**



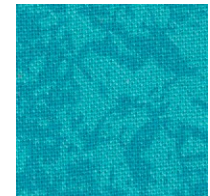
**BERRY LEAVES
& PINEAPPLE
LEAF**



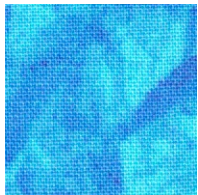
**APPLE STEM
& GRAPE
LEAVES**



**PINEAPPLE
LEAF**



**PINEAPPLE
LEAF**



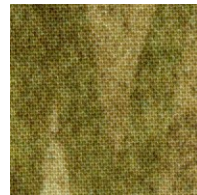
PEAR



**PEAR
LEAVES &
GRAPES (6)**



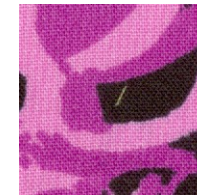
GRAPES (3)



**MELON
LEAF**



**MELON
LEAF)**



MELON



**MELON
CENTER**



903-638-6915
bomhq@stitchinheaven.com