

ROSEVILLE ALBUM

Month #6

Block #6



BACKGROUND
(13 BLOCKS)
Step #3 in
cutting directions



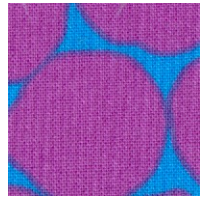
LEAF



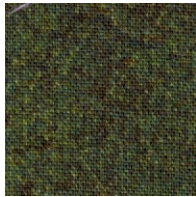
LEAF



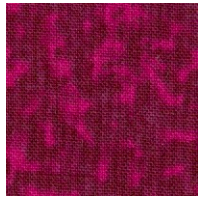
LEAF



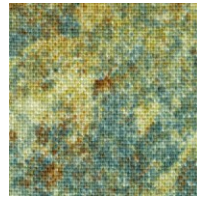
BIG CENTER FLOWER



CALYXES
(3)



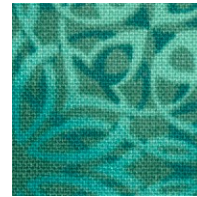
BIG CENTER FLOWER



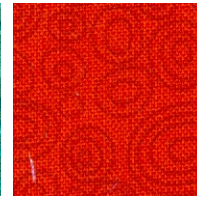
CALYXES
(4)



TOP FLOWER LEAVES



BIG CENTER FLOWER



BIG TOP FLOWERS
(2)



BIG TOP FLOWERS
(2)



LEAF



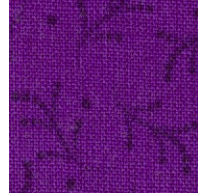
BOTTOM LEAF



BOTTOM LEAF



VASE BODY



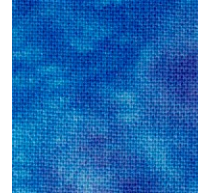
VASE BASE & HANDLES



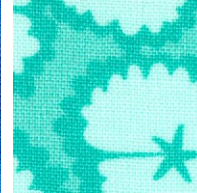
VASE RIM



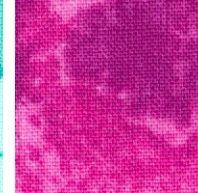
CALYX & BOTTOM FLOWER



BOTTOM FLOWER & CIRCLE



STEM FLOWER



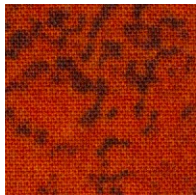
CALYX



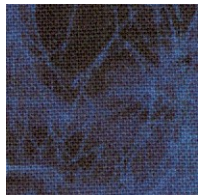
CALYX



BOTTOM FLOWER



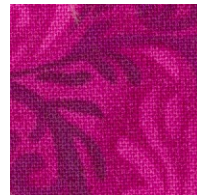
BOTTOM FLOWER



BOTTOM FLOWER



BOTTOM FLOWER



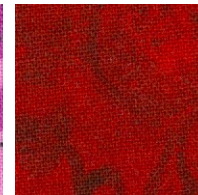
CIRCLE



BOTTOM FLOWER



BOTTOM FLOWER



BOTTOM FLOWER



BOTTOM FLOWER

