



**BACKGROUND
(13 BLOCKS)**
Step #3 in
cutting directions

ROSEVILLE ALBUM

Month #8

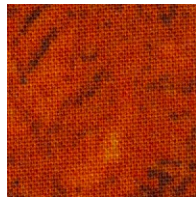
Block #8



VASE



**VASE
CIRCLES
(7)**



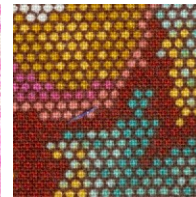
**BIG
CENTER
FLOWER**



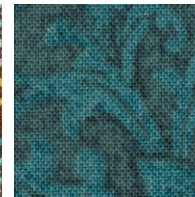
**SIDE BIG
FLOWERS
(2)**



**LEAVES
(2)**



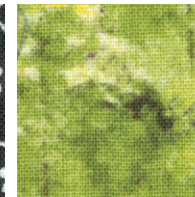
**CENTER
BUD &
CIRCLE**



**CENTER
CALYX**



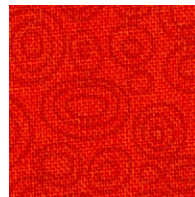
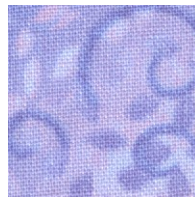
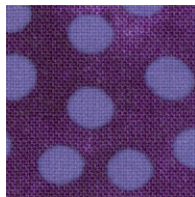
**BIG
LEAF**



CALYX



**LG LEAF,
LEAVES (5) &
SM LEAVES (2)**



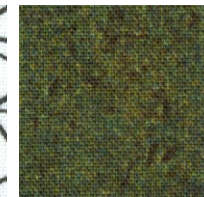
BUD



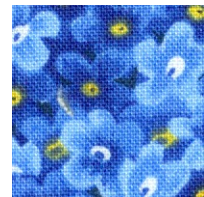
**LG LEAF &
SMALL
LEAVES (2)**



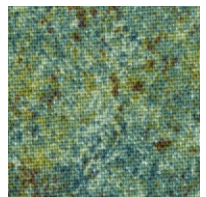
**LG LEAF
& LEAF**



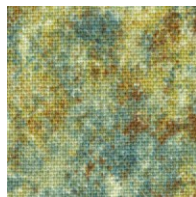
**CALYX
& LEAF**



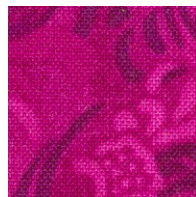
**TOP
CIRCLES
(2)**



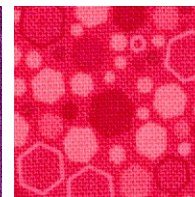
**CALYXES
(2)**



**CALYXES
(2)**



**LEAF &
CIRCLES
(4)**



LEAF

