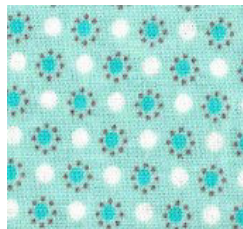


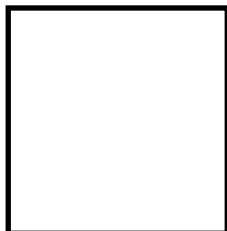
SNOWMAN SAMPLER

Month #1—November

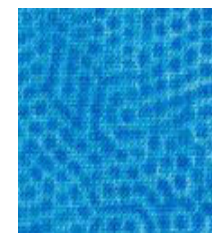
Block # 1



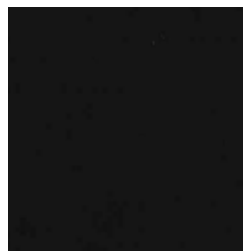
Background



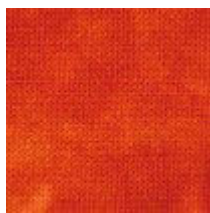
White Fabric for
Snowman body



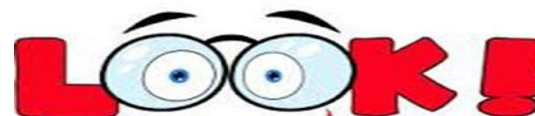
Use these fabrics to make 4 flying geese blocks
from each color



Hat, buttons, &
face



Nose



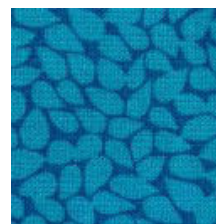
The pattern gives cutting directions for using with the Quilt In A Day Flying Geese ruler, or you may use any other method to end up with 3 1/2" x 6 1/2" blocks.



Green for holly
leaves



Holly berries



Fabrics for pinwheel block for
snowman insert.



903-760-7397

bomhq@stitchinheaven.com