

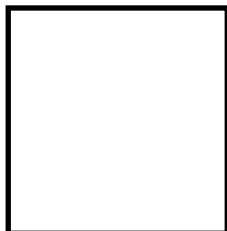
SNOWMAN SAMPLER

Month #6 - APRIL

Block # 6



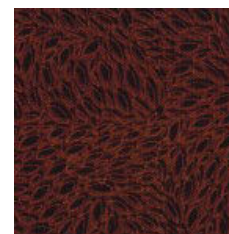
Background



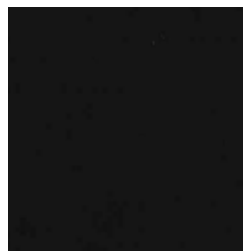
White Fabric for
Snowman body



Bird



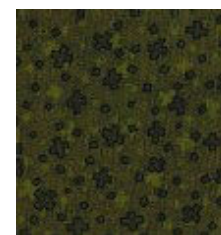
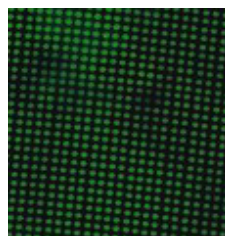
Tree trunk



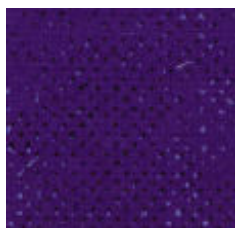
Hat, buttons, &
face



Nose



Use these 3 fabrics to make 4 green flying geese
blocks from each square for trees



Square in a square block,
Buttons



The pattern gives cutting directions for using
with the Quilt In A Day Flying Geese ruler, or
you may use any other method to end up with
3 1/2" x 6 1/2" blocks.



903-760-7397

barb@stitchinheaven.com