

Month # 1

**TEA LEAF, INDIAN STAR, PUZZLE,
MILKY-WAY BLOCKS, SETTING SQUARES**

**TEA LEAF
BLOCK**



GREEN
PRINT

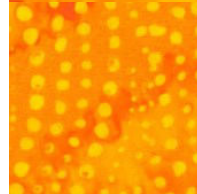


BACKGROUND
(light)

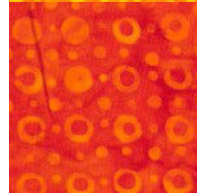
**INDIAN STAR
BLOCK**



GOLD



GOLD/ORANGE
BACKGROUND



RED/ORANGE
STAR POINTS

**PUZZLE
BLOCK**



DARK PURPLE



LIGHT
LAVENDER



LAVENDER
PRINT

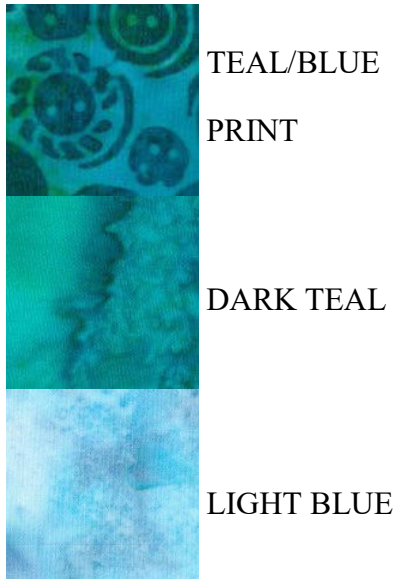


903-760-7397
bomhq@stitchinheaven.com

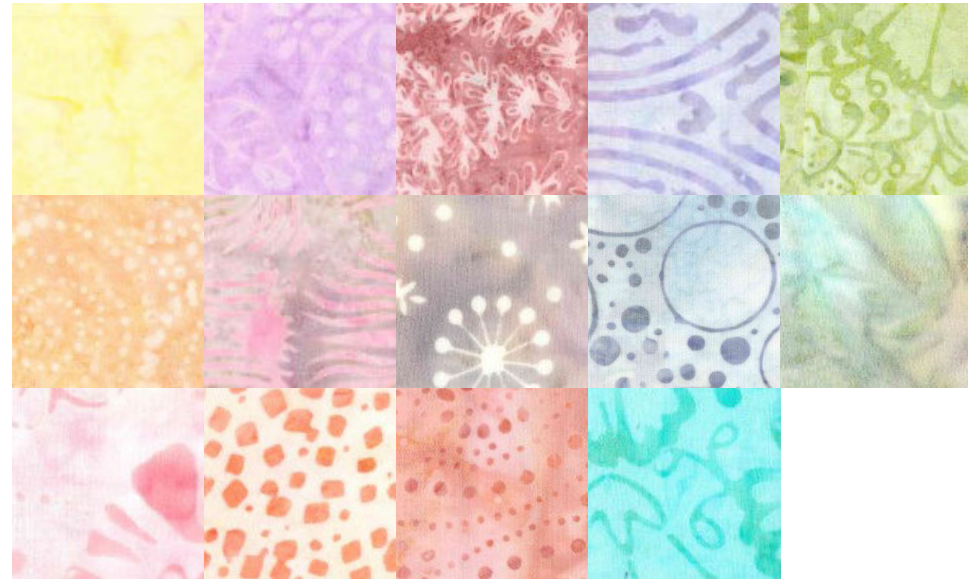
Month # 1

TEA LEAF, INDIAN STAR, PUZZLE, MILKY-WAY BLOCKS, SETTING SQUARES

MILKY-WAY BLOCK



SETTING SQUARES



MILKY WAY NOTE:

The pattern calls for a teal print and a teal blue print. You are receiving one fabric for both of those. You will need to cut two $2 \frac{7}{8}$ " squares, cut once diagonally to form four half-square triangles, and cut one $2 \frac{1}{2}$ " square. The friendship star that is the highlight of this block is all one color, the teal blue print. Please call or email me with any questions.



903-760-7397
bomhq@stitchinheaven.com