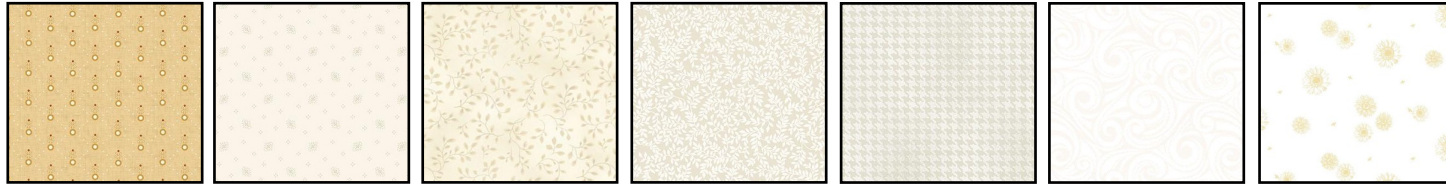


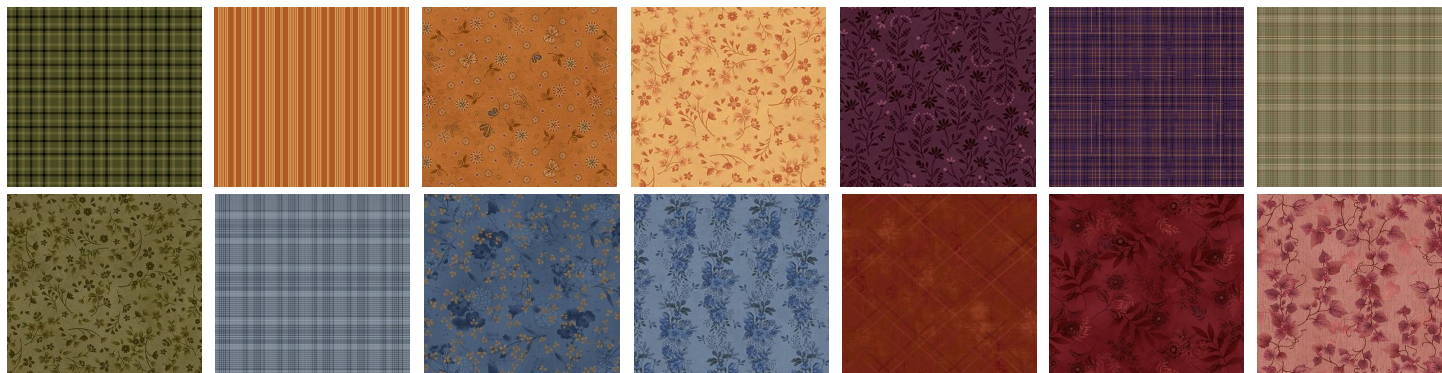
Stellar Garden

Month #5

Pieced Section 5



7 Creams
7 x 23 Each



14 Darks
5 x 5 Each

A few of the applique pieces overlap into the first border, so we will be sending fabrics to make the block backgrounds in Months 1-7. We will be sending the applique in Months 8, 9, 10 and 11.



903-760-7397
info@stitchinheaven.com