

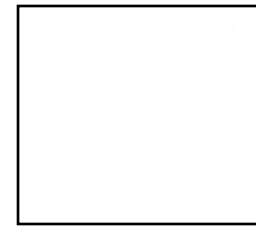
STELLAR STARBURST 2019

Fabrics for Stellar Starburst



Background

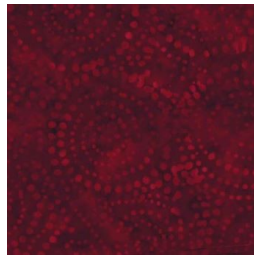
Large Quilt 106 X 106
Non-Kaleidoscope



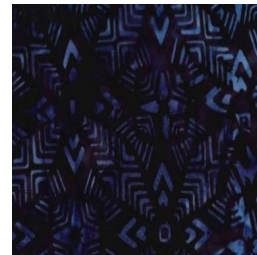
E



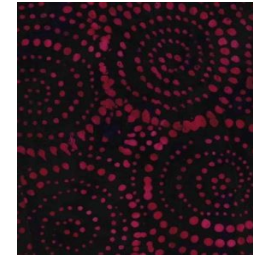
A



B



C



D



To help in cutting the correct sizes for this quilt you will want to mark your pattern for the

LARGE QUILT

NON-KALEIDOSCOPE VERSION

Highlighting the version you will be using or covering or marking over the versions not used for this quilt so that you do not mis-cut your fabrics

* Remember as instructed on page 4 that seams should be sewn a scant 1/4" for blocks to come out the correct size.

This program is set up for you to save fabrics to be used in future months.

