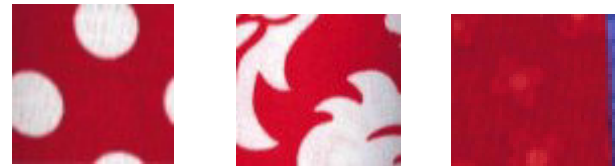


TEA PARTY

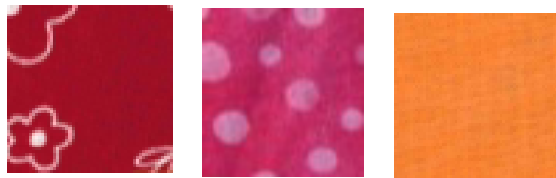
Month #6
Coffee Mugs
Block #6



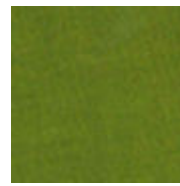
Cups

Saucer

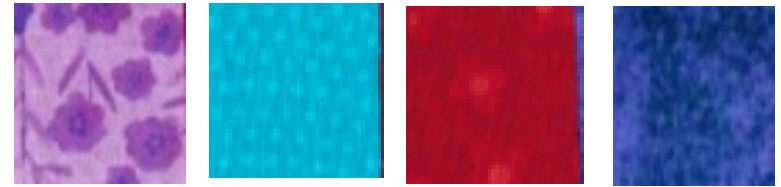
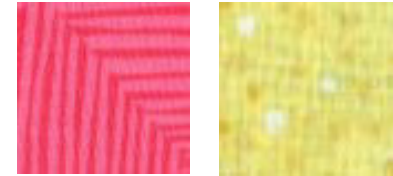
Inner Rim



Cup Handles (use green from stems for 4th handle)



Stems & Mug Handle



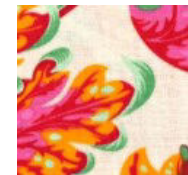
10 Assorted Bright Fabrics for Flower Circles



Flower Motif Fabrics (or mix and match)



Dot Fabric



Bright Border Fabric



903-638-6915

bomhq@stitchinheaven.com