

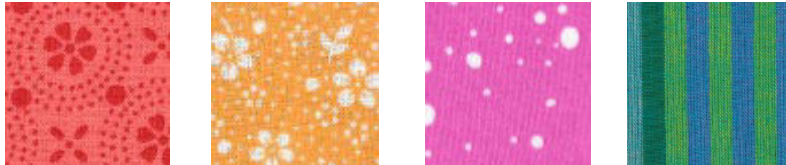
# TEA PARTY

Month #7

Pinwheels

Block #7

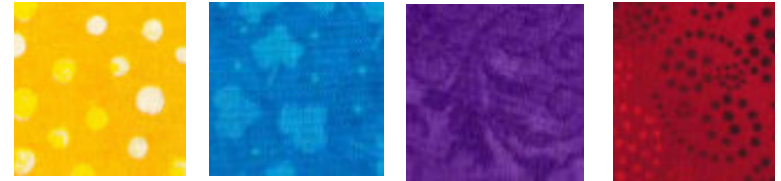
Block #1



Inner Pinwheel

Points

Pinwheel Border



Block #2

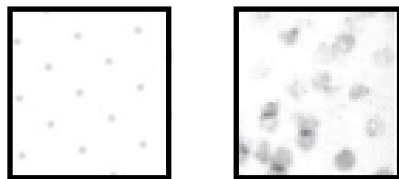
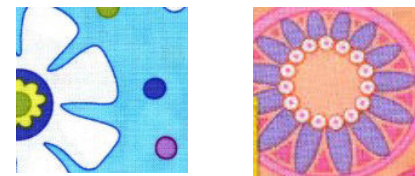


Inner Pinwheel

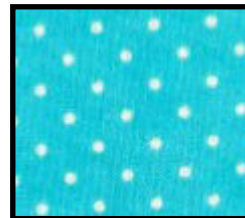
Points

Pinwheel Border

8 Assorted Bright Fabrics for Flower Circles



Inner Block Backgrounds



TURQUOISE BACKGROUND

Large Flower Motifs  
Use previous small flower motifs and remember to save your scraps for later to mix and match in an arrangement that pleases you!



903-638-6915

[bomhq@stitchinheaven.com](mailto:bomhq@stitchinheaven.com)