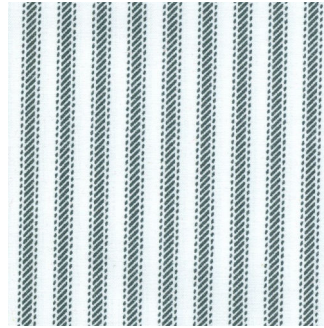


# TEXAS OUR TEXAS 2018

Month #1 MARCH

TEXAS LETTERS  
Block #1



LETTERS BACKGROUND

TOP - 33" X 10"

SIDE - 60" X 10"

You have been sent the full length needed for the side strip, so you will not have to piece the 18" that the pattern mentions in Month #2. You will just appliqué onto the bottom of this strip.



TEXAS LETTERS



903-638-6915 ext 105

[bomhq@stitchinheaven.com](mailto:bomhq@stitchinheaven.com)