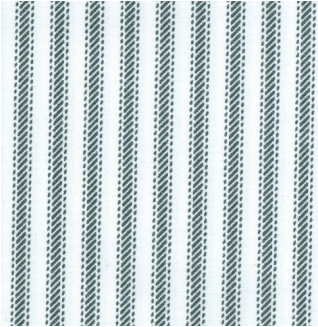


TEXAS OUR TEXAS 2019

Month #1 FEBRUARY

TEXAS LETTERS
Block #1

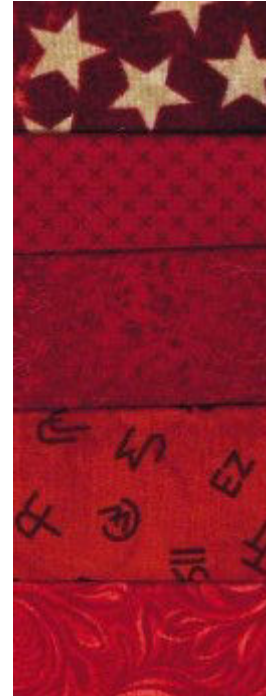


LETTERS BACKGROUND

TOP STRIP - 33" X 10"

SIDE STRIP - 60" X 10"

You have been sent the full length needed for each strip, so **you will not have to sew the extra 18" piece on that the pattern mentions in Month #2.** You will just appliqué the armadillo in block #2 onto the bottom of this strip. **Do not cut this strip off because the extra will be for Month #2.**



TEXAS LETTERS

You may have different reds or a couple more reds that are of a different size, but there will be enough to cut the number of letters that you need.



903-638-6915 ext 105

bomhq@stitchinheaven.com