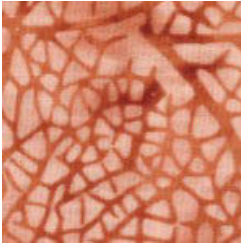


TRANQUILITY

Month #11

CORNERS AND SASHING BLOCKS FOR STAR BORDER



15"xWOF for
16—2 1/2" x 14" strips

11"x14" for
4—2 1/2" x 6 1/2" and
4—2 1/2" x 4 1/2"

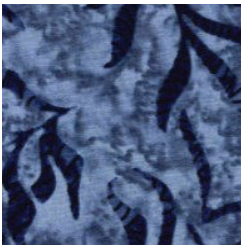
FABRIC #5



15"xWOF for
16—2 1/2" x 14" strips

12"x8" for
4—2 1/2" x 4 1/2" and
4—2 1/2" x 2 1/2"

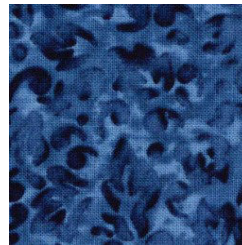
FABRIC #10



15"xWOF for
16—2 1/2" x 14" strips

6"x6" for
4—2 1/2" x 2 1/2"

FABRIC #12



21"xWOF

Use:
15"xWOF for
16—2 1/2" x 14" strips

Use remainder for
4—2 1/2" x 8 1/2" and
4—2 1/2" x 6 1/2"

FABRIC #14



903-638-6915

bomhq@stitchinheaven.com