

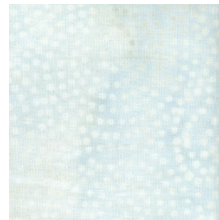
TWILIGHT SONG SAMPLER 2017

Month #12 JUNE

Block #12a-b-c

CORRECTIONS for Block #12 pattern!

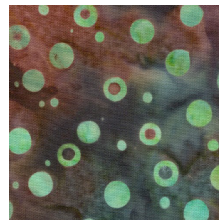
In the cutting directions for 12A, fabric A should read cut (1) 2 1/2" x 7 1/2" (instead of 6 1/2"), and cut (2) 1 1/2" x 9 1/2" (not 2")! The assembly directions have the correct measurements. Also, in the step one half square triangles, under C...it should be fabric G (not H)!



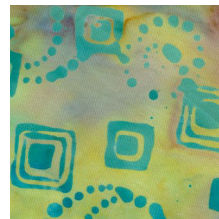
A
Swirl dot



C
yellow



D



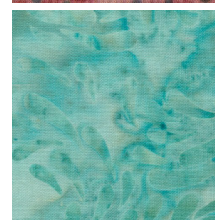
E



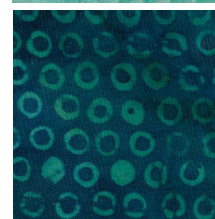
F



G



H



I

