

URBAN OWLS

Month #5

House Blocks

House #1



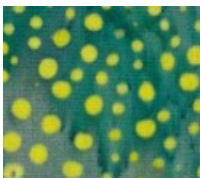
Background



Roof & Chimney

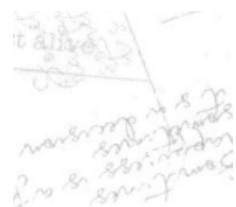


Door

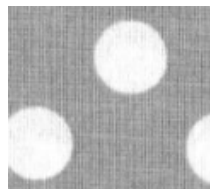


Grass

House #2



Background - writing



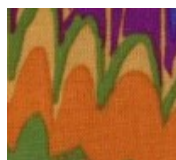
Roof & Chimney



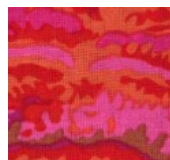
Door



Grass



Bird body



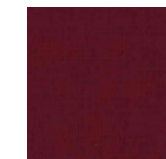
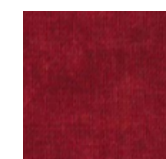
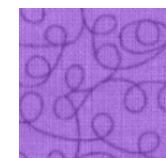
Bird wing



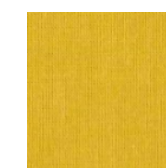
Cat body



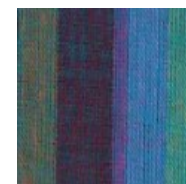
Cat Stripes



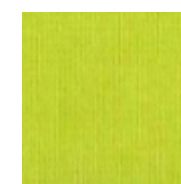
Flowers



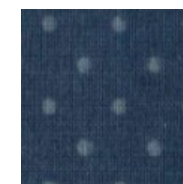
Flower Centers: Medium & Small



Stems



Leaves



Leaf Centers



The fabric with faces is intended for use as the windows, if you wish.

| | |
|------------------------|-----|
| r, snipe, . . . | 585 |
| ofous godwit. . . | 585 |
| ocetta, avocet. . . | 585 |
| ia, field lark, . . . | 562 |
| a, crested lark, . . . | 562 |
| is, skylark, . . . | 562 |
| pestris, hedge war- | |
| pestris, hedge war- | 543 |
| a, blue creeper, . . . | 532 |
| redstarts, . . . | 541 |

Background both blocks



903-638-6915

bomhq@stitchinheaven.com